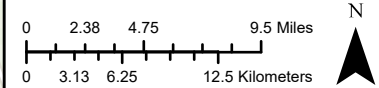


Lake Houston Area Grassroots Flood Prevention Initiative (FPI) Petition Area



**Protecting Texas by
Reducing and
Preventing Pollution**

Texas Commission on Environmental Quality
Water Quality Division
Mail Code 148
Post Office Box 13087
Austin, Texas 78711-3087



Texas Statewide Mapping System (TSM) Projection

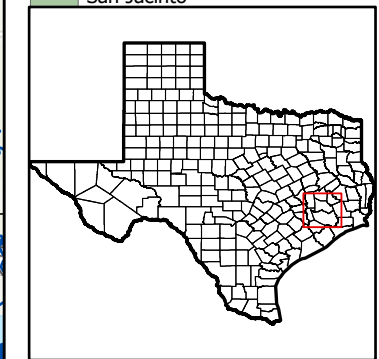
Legend

- Registered APOs
- MSGP Sector J Facilities
- Counties
- United States Geological Survey Hydrologic Unit Code 8
- Surface Waters of the State
- FPI Stream Segments

River Basins

BASIN_NAME

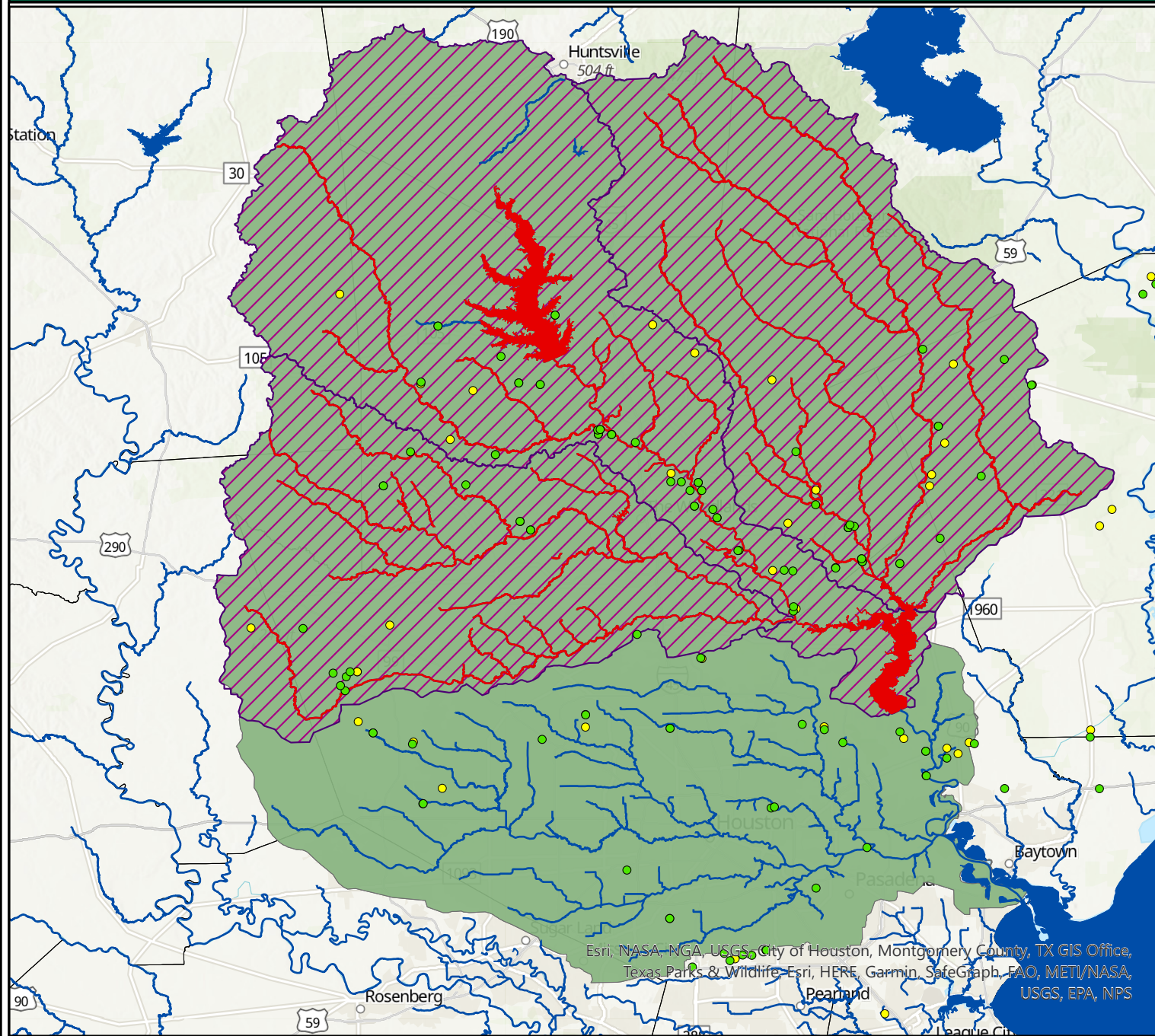
San Jacinto



Map created on 11/6/2020

For more information concerning this map, contact the Water Quality Division at 512-239-3925.

This map was generated by the Texas Commission on Environmental Quality, Water Quality Division. This product is for informational purposes and may not have been prepared for or be suitable for legal, engineering, or surveying purposes. It does not represent an on-the-ground survey and represents only the approximate relative location of property boundaries.



Esri, NASA, NGA, USGS, City of Houston, Montgomery County, TX GIS Office, Texas Parks & Wildlife, Esri, HERE, Garmin, SafeGraph, FAO, METI/NASA, USGS, EPA, NPS