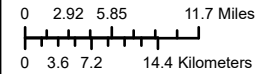


# Texas Aggregates and Concrete Association (TACA) Petition Area



**Protecting Texas by  
Reducing and  
Preventing Pollution**

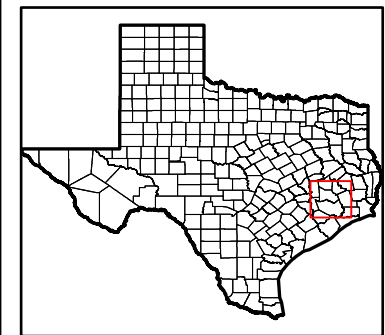
Texas Commission on Environmental Quality  
Wastewater Permitting Section  
Mail Code 148  
Post Office Box 13087  
Austin, Texas 78711-3087



Texas Statewide Mapping System (TSMS) Projection

## Legend

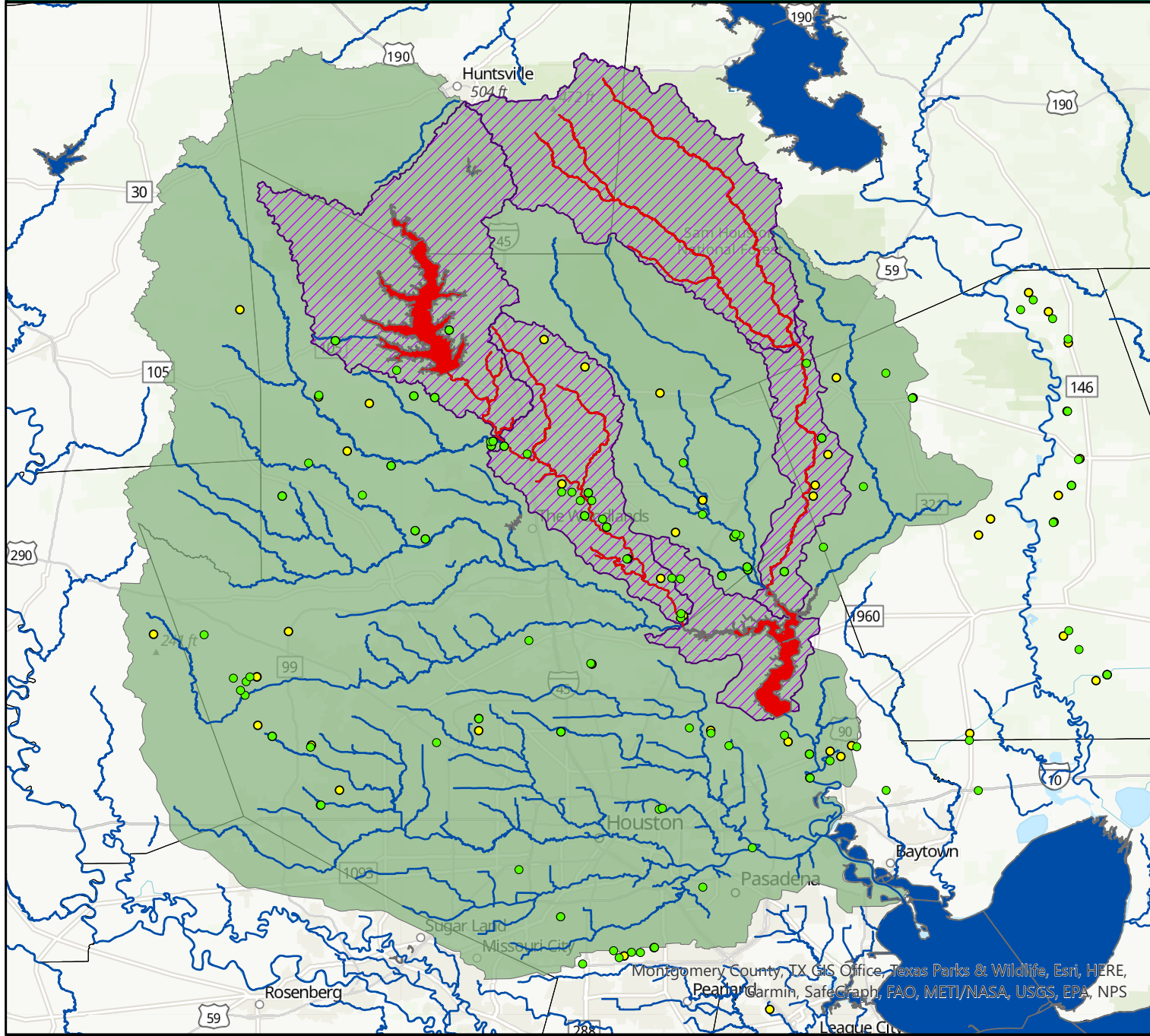
- Registered APOs
  - MSGP Sector J Facilities
  - Counties
  - United States
  - Geological Survey Hydrologic Unit Code 10 Watersheds
  - Surface Waters of the State
  - TACA Stream Segments
- River Basins**
- BASIN\_NAME
- San Jacinto



Map created on 10/29/2020

For more information concerning this map, contact the Water Quality Division at 512-239-2908.

This map was generated by the Texas Commission on Environmental Quality, Water Quality Division. This product is for informational purposes and may not have been prepared for or be suitable for legal, engineering, or surveying purposes. It does not represent an on-the-ground survey and represents only the approximate relative location of property boundaries.



Montgomery County, TX GIS Office, Texas Parks & Wildlife, Esri, HERE, DeLorme, Mapbox, Microsoft, Swire, NOAA, GEBCO, USGS, EPA, NPS, OpenStreetMap contributors, and the GIS User Community